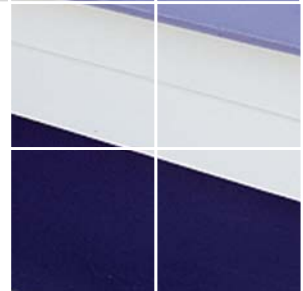


nutec[®]
ROOFING AND CLADDING SOLUTIONS

Windowsills

Ideal for internal and external window sill applications



Introduction

Nutec windowsills are manufactured from a **composite material containing Portland cement, silica and organic fibres, and do not contain any asbestos fibres**. The combination of these materials which have considerable strength in their own right, forms a strong and durable board.

Windowsills are being successfully used for applications internally and externally in mass housing, upmarket housing, commercial and industrial projects.

Windowsills are available in lengths to suit standard steel window frames and widths for standard wall thicknesses. Long lengths of 3,0m and 3,6m are also available in standard widths which can be cut on site to suit non-standard steel, wood and aluminium window frames.

The sills have a smooth finish and are supplied in their natural colour and do not require any surface treatment for protection.

A clear wax polish can be applied to the surface to enrich their natural colour, or they can be painted on site with any water-based paint without pretreatment. An acrylic PVA paint is recommended.

Nutec products carry the SABS mark under specification SANS 803.

Index

2

General Design Criteria	3
Handling and Storage	3
General Installation Guidelines	4
Installation Procedures	5
Product Range	6
Company - Contact Details	7

Catalogue Information

The information contained in this catalogue serves as a general guide only and should not be accepted as the standard for all construction. Consult EVERITE for designs of a special nature.

This service is provided free of charge and without obligation, but architects, engineers and specifiers must finally approve the acceptability in terms of the design and construction criteria, as well as other implications.

Standard Windowsills

Windowsills are supplied cut to size complete with fixing accessories.

If sills are supplied in long standard lengths to be cut on site they will not be pre-drilled. The setting out for the drilling must be carried out as follows:

- The distance between any two lug fixing holes should be approximately 400mm.
- The distance between the end of the Windowsill and the first and last hole should not exceed 75mm.

Fixing Accessories

The underside of the sill is pre-drilled to receive the lug and a self-tapping screw.

Handling and Storage

EVERITE windowsills are manufactured from composite materials and may be damaged under excessively high shock loads.

Reasonable care should therefore be taken to ensure that products are not dropped or subjected to rough handling.

A suitable level compacted area must be made available where sheets can be stored safely.

The stacks should be supported at maximum 600mm apart, clear of the ground, and should be protected against possible damage.

- Although Nutec windowsills do not contain asbestos fibres, it is nevertheless recommended that when working with the product, tools which do not create excessive dust are used.

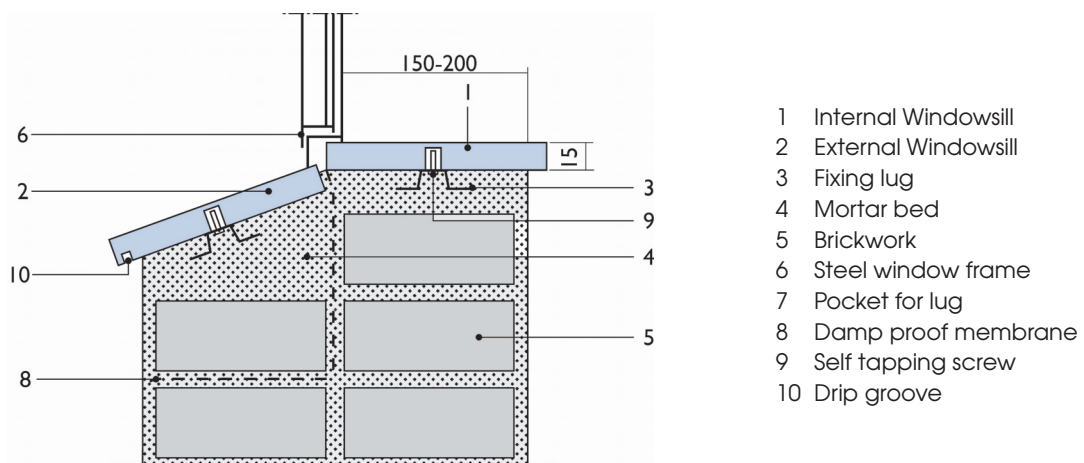
For further information refer to the brochure '**Finishing and Maintenance**'.

- Before setting the sill in the mortar ensure that the metal lugs are firmly attached to the sill. The product should also be soaked in water prior to bedding.
- Where only a thin mortar bed is possible and the metal lug cannot be fully embedded, pockets in the masonry should be provided to ensure adequate fixing.
- In cases where sills are to be plastered into reveals, sill ends should be separated from the plaster by means of a thin joint or plastic sheeting to allow for minor expansion or shrinkage. This will prevent possible plaster cracks from developing.

Installing the Sill

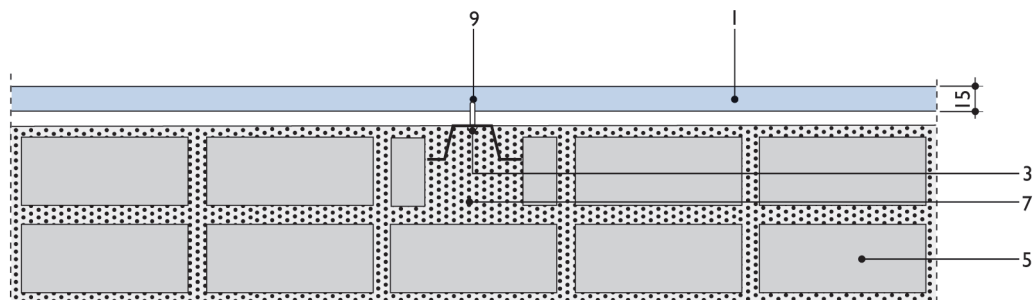
- Lay a bed of mortar on top of masonry or concrete which has previously been prepared to the desired level and slope.
- Place the top edge of the sill under the leading edge of the window frame.
- Press the sill down firmly so that the metal lug is well embedded into the mortar. Ensure that the sill runs parallel to the window frame and the wall on which it is laid.
- Although the sills are all autoclaved which reduces any tendencies to warp, it is recommended that the sills should be kept damp by means of regular water spraying or covering with wet bags. This will assist in the curing of the mortar bed.

FIG.1 Section showing internal and external sills in position



All dimensions in mm

FIG.2 Section through sill showing pocket for fixing lug



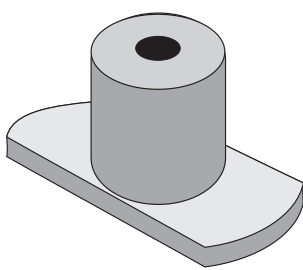
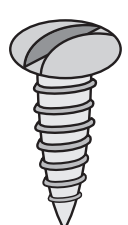
All dimensions in mm

NUTEC Windowsills

Product No.	Thickness mm	Length mm	Width mm	Average Mass kg
031-507	15	533	150	2.1
031-516	15	533	175	2.5
031-508	15	1 022	150	4.0
031-517	15	1 022	175	4.7
031-509	15	1 511	150	6.0
031-518	15	1 511	175	7.0
031-510	15	2 000	150	7.9
031-519	15	2 000	175	9.2
031-511	15	2 489	150	9.8
031-520	15	2 489	175	11.5
031-512	15	3 000	150	11.8
031-521	15	3 000	175	13.8
031-501	15	3 600	150	13.9
031-502	15	3 600	175	16.6

Although these Standard widths are available in any length up to and including 3600 mm, prices will be calculated to the next highest 100 mm, e.g. a 1030 mm length will be charged as a 1100 mm length.

Fixing Accessories

Product No.	Description	Sketch of Article
685-119	Windowsill lug	
685-110	10mm x 10mm self-tapping screw	

Call Centre - 0861 333 835
www.everite.co.za

Sales Support Office

P O Box 8644 Johannesburg 2000
 Heidelberg Road Kliprivier Gauteng
 Telephone (011) 439 4400
 Telefax (011) 903 7097

Cape Town

P O Box 26 Brackenfell 7561
 Ground Floor Corporate Place
 Mispel Street Belville
 Telephone (021) 941 8640
 Telefax (021) 941 8641

Durban

P O Box 1532 Wandsbeck 3631
 1st Floor Kent House
 1 Neptune Road Essex Terrace
 Westville 3629
 Telephone (031) 267 1903
 Telefax (031) 267 1907

Bloemfontein

P O Box 981 Bloemfontein 9300
 76/80 President Reitz Street
 Reitz Park Westdene
 Telephone (051) 448 7433
 Telefax (051) 448 7435

East London

P O Box 679 East London 5200
 3 Suffolk Road Berea
 Mobile (079) 516 6510
 Telefax (043) 726 0343

George

P O Box 444 George 6530
 Building Exhibit Centre
 Corner Market & Hope St George
 Telephone (044) 873 2408
 Mobile (083) 286 3435
 Telefax (044) 873 2409

Middelburg (Mpumalanga)

P O Box 7017 Kanonkop
 Middelburg 1050
 Mobile (083) 778 2787
 Telefax (013) 244 2629

Polokwane

P O Box 552
 Polokwane 0700
 26, 20th Avenue Industria
 Telephone (015) 297 3559/62
 Telefax (015) 297 3424

Port Elizabeth

P O Box 34323
 Newton Park 6055
 Propnet Park Ries Street
 Deal Party
 Telephone (041) 401 8900
 Mobile (083) 780 6162
 Telefax (041) 486 1884

Worcester

P O Box 492
 Worcester 6851
 1 Nassau Street Worcester
 Mobile (083) 286 3431
 Telefax (023) 342 6966

Botswana (Gaborone)

Private Bag 003 Suite 466
 Mogoditshane
 Botswana
 Mobile (00267) 7 263 9887
 Telefax (00267) 316 7753

Namibia

P O Box 894
 Swakopmund
 Mobile (00264) 81 124 2655
 Telefax (00264) 64 40 3733